

Cochlear™ Wireless TV Streamer

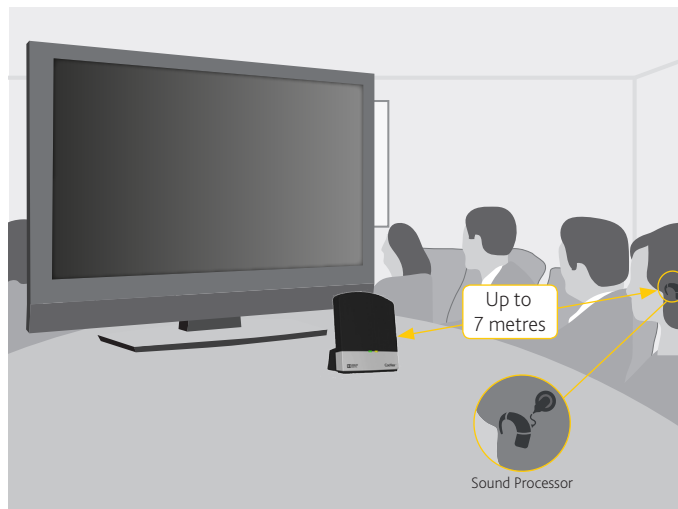
Quick guide for CP900 Series users



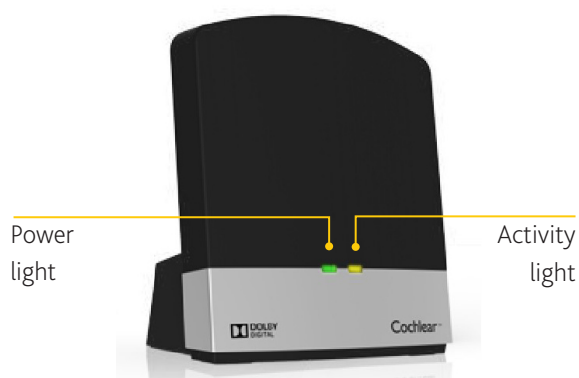
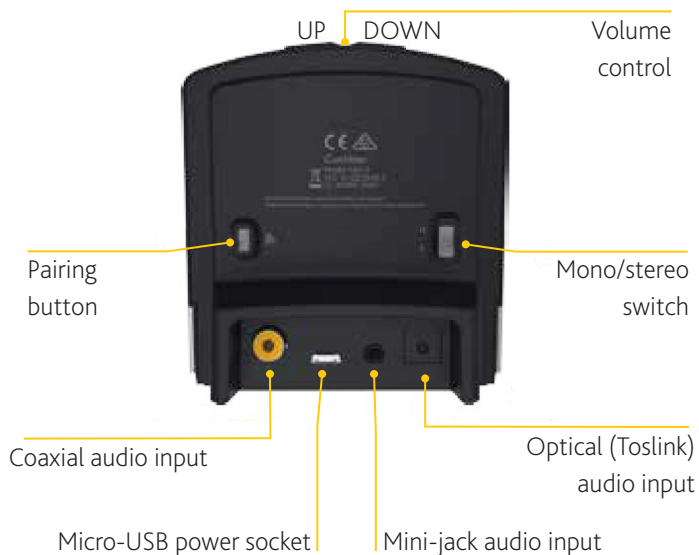
Features of your Cochlear Wireless TV Streamer

- Enjoy high quality streamed audio direct to your CP900 Series Sound Processor from your TV, stereo, computer or other similar device.
- Supports both analog and digital input.
- Reconnects automatically if you leave the room and return within 5 minutes.
- Install it and forget it - just click a button to watch TV.

The TV Streamer plugs into an ordinary wall socket and plugs directly into your audio device. The TV streamer will stream stereo sound through your sound processors from up to 7 metres away.



Product overview



Getting Started

Adjusting the volume

How to:

To change the volume, use the volume control on the TV streamer. Make sure that your sound processors are comfortably adjusted before you change the settings with the volume control. In most cases you only need to make this adjustment once, since the TV Streamer will store the most recently set volume level.

Mono/stereo control

How to:

The two-position Mono/Stereo switch may be used to set Stereo or Mono audio streaming. For bilateral fittings, the switch should preferably be set to the Stereo position. For unilateral fitting it should be set to the Mono position.

Cochlear™ Wireless TV Streamer

Quick guide for CP900 Series users

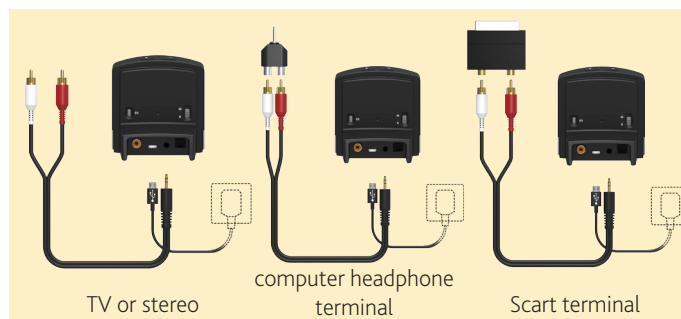


Pairing with your CP900 Series Sound Processor

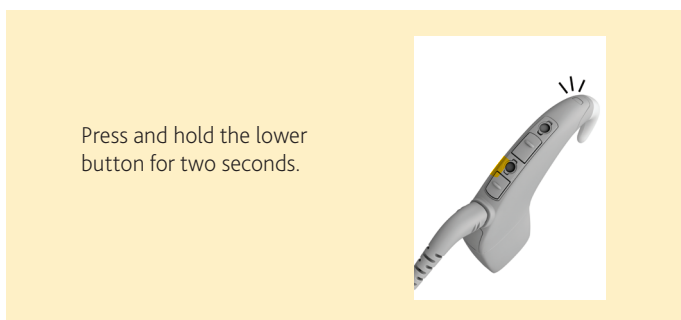
- A** Plug your TV Streamer into the wall using the power cord and micro-USB socket on the TV Streamer.



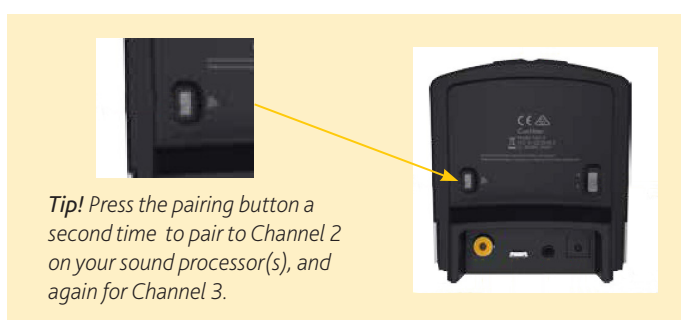
- B** Plug the audio cable into the mini-jack audio input socket on your TV Streamer and connect it to the audio source.



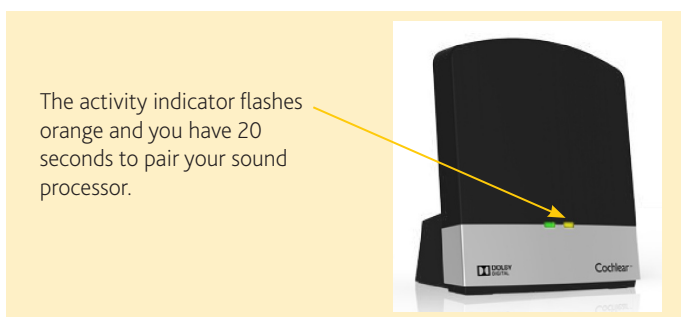
- C** Switch off your CP900 Series Sound Processor.



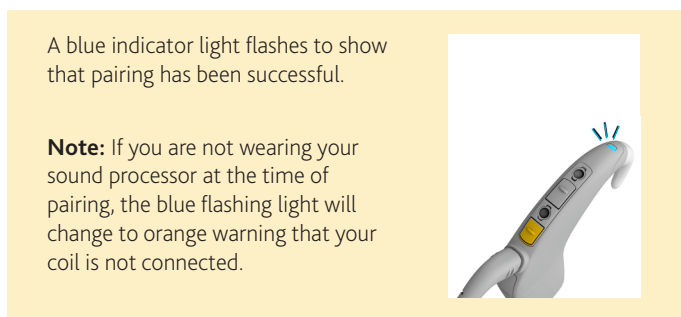
- D** Press the pairing button on your TV Streamer once.



- E** Your TV Streamer is in pairing mode.



- F** While pairing mode is active, switch on your sound processor.



Support

For full details about the Cochlear Wireless TV Streamer, please refer to the User Guide that was packaged with your TV Streamer, and the Wireless Accessories User Guide.

For full details about your Cochlear CP900 Series Sound Processor, please refer to its User Guide.

For further support and videos, visit the Cochlear website: www.cochlear.com

Cochlear™ Wireless TV Streamer

Quick guide for CP900 Series users



Using your Cochlear Wireless TV Streamer

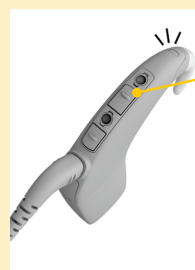
Start streaming using your sound processor

A Turn on your sound processor and TV Streamer.



Long-press the upper button on your sound processor once.
The sound processor flashes a blue light to indicate audio is streaming.

B To select another channel or stop streaming.



Long press the upper button a second time to select Channel 2, and again for Channel 3.

To stop streaming, short-press the upper button.

Start streaming using your CR230 Remote Assistant

Method 1: Turn on your sound processor and TV Streamer. Turn on your CR230 Remote Assistant.



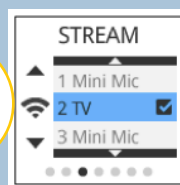
Long-press the Telecoil button.

Tip! Long press the button a second time to select Channel 2, and again for Channel 3.

When your audio device is turned on, audio will start streaming through the TV Streamer.

To stop streaming, short-press the Telecoil button.

OR



From the Home screen, press the right arrow button until you see the Stream screen. Scroll down the list to the channel you want to use and press **OK**.

When your audio device is turned on, audio will start streaming through the TV Streamer.

To stop streaming, select **Off** on the Stream selection screen.

Start streaming using your CR210 Remote Control

A Turn on your sound processor and TV Streamer. Turn on your CR210 Remote Control.



Long-press the Telecoil button.

When your audio device is turned on, audio will start streaming through the TV Streamer.

B To select another channel or stop streaming.



Long press the Telecoil button a second time to select Channel 2, and again for Channel 3.

To stop streaming, short-press the Telecoil button.

Cochlear Wireless Accessories:

Cochlear Bone Anchored Solutions AB Konstruktionsvägen 14, SE - 435 33 Mölnlycke, Sweden

Tel: +46 31 335 1461 Fax: +46 31 335 1460

Nucleus 6 System:

Cochlear Ltd (ABN 96 002 618 073) 1 University Avenue, Macquarie University, NSW 2109, Australia

Tel: +61 2 9428 6555 Fax: +61 2 9428 6352

Cochlear Ltd (ABN 96 002 618 073) 14 Mars Road, Lane Cove, NSW 2066, Australia

Tel: +61 2 9428 6555 Fax: +61 2 9428 6352

Regional Offices:

Cochlear Americas 13059 E Peakview Avenue, Centennial, CO 80111, USA

Tel: +1 303 790 9010 Fax: +1 303 792 9025

Cochlear Deutschland GmbH & Co. KG Karl-Wiechert-Allee 76A, 30625 Hannover, Germany

Tel: +49 511 542 770 Fax: +49 511 542 7770

株式会社日本コクレア (**Nihon Cochlear Co Ltd**) 〒113-0033 東京都文京区本郷2-3-7 お茶の水元町ビル

Tel: +81 3 3817 0241 Fax: +81 3 3817 0245

www.cochlear.com

ACE, Advance Off-Stylet, AOS, AutoNRT, Autosensitivity, Beam, Button, Carina, Clininet, Cochlear, コクレア, Codacs, Contour, Contour Advance, Custom Sound, ESPrit, Freedom, Hear now. And always, Hybrid, inHear, Invisible Hearing, MET, MP3000, myCochlear, NRT, Nucleus, Nucleus in Chinese characters, Off-Stylet, SmartSound, Softip, SPrint, the elliptical logo and Whisper are either trademarks or registered trademarks of Cochlear Limited. Ardium, Baha, Baha Divino, Baha Intenso, Baha PureSound, Baha SoftWear, DermaLock, Vistafix and WindShield are either trademarks or registered trademarks of Cochlear Bone Anchored Solutions AB.

© Cochlear Limited 2014

532745 ISS2 JUN14